

Series load cells: **DTL - COL - COK**

Up to 50000 kg application range



**DOUBLE SHEAR BEAM load cells**



**COLUMN load cells**

MAX STATIC LOAD    kg	FOR LOAD CELLS	NET WEIGHT (kg)	CODE
<b>50000</b>	<b>DTL - COL - COK</b>	<b>39</b>	<b>VCOKDTL</b>

*Load cell not included.*

### DESCRIPTION

- Galvanized steel upper and lower plate.
- Galvanized steel plate (for DOUBLE SHEAR BEAM load cell).
- Upper and lower bases (for COLUMN load cell).
- Two integrated galvanized steel stay rods with dual ball-and-socket joints suitable to counter the lateral force.
- Anti-tilt constraint consisting of two threaded rods with self-locking nut.

### По вопросам продаж и поддержки обращайтесь:

Архангельск (8182)63-90-72  
Астана +7(7172)727-132  
Астрахань (8512)99-46-04  
Барнаул (3852)73-04-60  
Белгород (4722)40-23-64  
Брянск (4832)59-03-52  
Владивосток (423)249-28-31  
Волгоград (844)278-03-48  
Вологда (8172)26-41-59  
Воронеж (473)204-51-73  
Екатеринбург (343)384-55-89  
Иваново (4932)77-34-06  
Ижевск (3412)26-03-58  
Иркутск (395) 279-98-46

Казань (843)206-01-48  
Калининград (4012)72-03-81  
Калуга (4842)92-23-67  
Кемерово (3842)65-04-62  
Киров (8332)68-02-04  
Краснодар (861)203-40-90  
Красноярск (391)204-63-61  
Курск (4712)77-13-04  
Липецк (4742)52-20-81  
Магнитогорск (3519)55-03-13  
Москва (495)268-04-70  
Мурманск (8152)59-64-93  
Набережные Челны (8552)20-53-41  
Нижний Новгород (831)429-08-12

Новокузнецк (3843)20-46-81  
Новосибирск (383)227-86-73  
Омск (3812)21-46-40  
Орел (4862)44-53-42  
Оренбург (3532)37-68-04  
Пенза (8412)22-31-16  
Пермь (342)205-81-47  
Ростов-на-Дону (863)308-18-15  
Рязань (4912)46-61-64  
Самара (846)206-03-16  
Санкт-Петербург (812)309-46-40  
Саратов (845)249-38-78  
Севастополь (8692)22-31-93  
Симферополь (3652)67-13-56

Смоленск (4812)29-41-54  
Сочи (862)225-72-31  
Ставрополь (8652)20-65-13  
Сургут (3462)77-98-35  
Тверь (4822)63-31-35  
Томск (3822)98-41-53  
Тула (4872)74-02-29  
Тюмень (3452)66-21-18  
Ульяновск (8422)24-23-59  
Уфа (347)229-48-12  
Хабаровск (4212)92-98-04  
Челябинск (351)202-03-61  
Череповец (8202)49-02-64  
Ярославль (4852)69-52-93

Киргизия (996)312-96-26-47

Казахстан (772)734-952-31

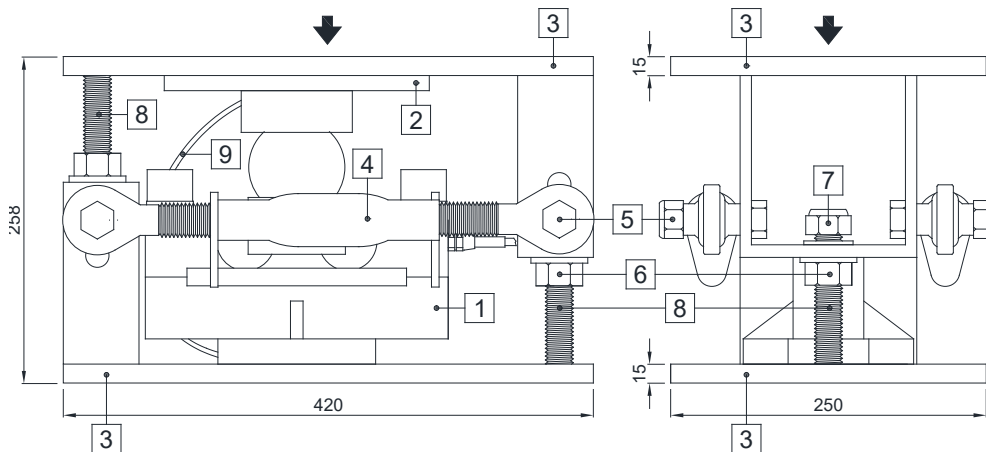
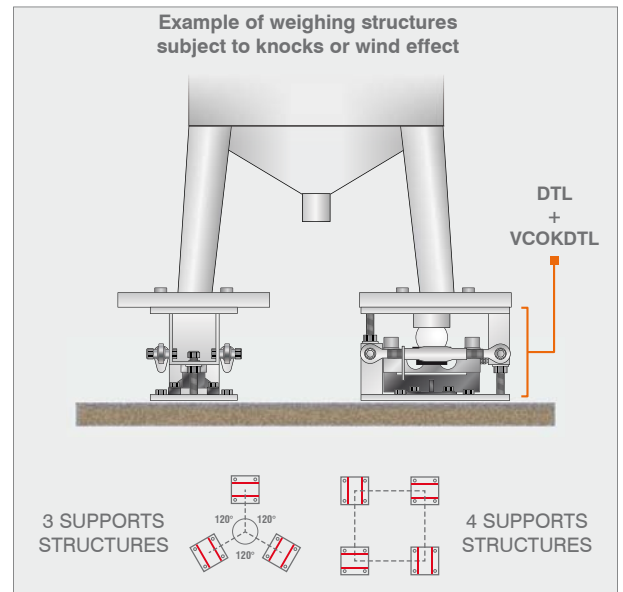
Таджикистан (992)427-82-92-69

### DIMENSIONS AND TECHNICAL SPECIFICATIONS

Upper and lower plates [3] must rest completely on not deformable surfaces. To ensure the stability of the structure, the system designer must predict any further precaution against side shifts and anti-tilt in function of: knocks and vibrations, wind effect, seismic conditions and hardness of support structure.

#### for DOUBLE SHEAR BEAM load cells (DTL):

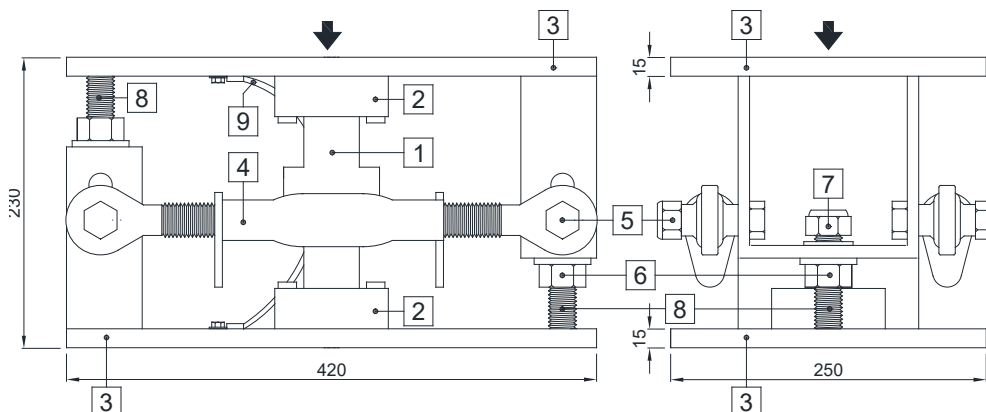
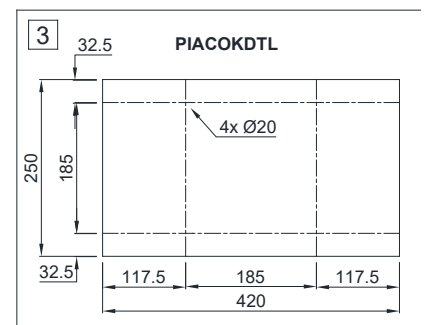
- Install the weighed system using only the mounting kit without the load cell [1] and inserting in its place a piece of pipe (Ø40x220 mm): unscrewing the nuts [5] and take off one of the two threaded rods [4] and the plate [2].
- To finish the installation (weldings, etc..), take off the piece of pipe and the plate [2]; to place the plate [2] on the load cell [1] and insert them in mounting kit.
- Fix the load cell and the plate by using the bolts provided.
- Connect lower and upper plates [3] to the earthing system [9] then loosen nuts [6]; verify that the threaded rod [8] slides into the hole; turn anti-tilt nuts [7] to a distance of 1 mm from plate.



- [1] Load cell.
- [2] Galvanized steel plate (PIATTODTL).
- [3] Galvanized steel upper and lower plates (PIACOKDTL).
- [4] Galvanized steel turnbuckle with horizontal constrainer function (TENDITORE300).
- [5] Self-locking nut Ø18.
- [6] Nut Ø22 to be used as jack.
- [7] Anti-tilt self-locking nut Ø22.
- [8] Threaded rod Ø22.
- [9] Copper wire for earthing connection.

#### for COLUMN load cells (COL - COK):

- Install the weighed system using only the mounting kit without the load cell [1] and inserting in its place a piece of pipe (Ø44x152 mm): unscrewing the nuts [5], take off one of the two threaded rods [4] and the lower base [2].
- To finish the installation (weldings, etc..), take off the piece of pipe and the lower base [2]; replace the load cell [1] on the lower base [2] and insert them in mounting kit.
- Connect lower and upper plates [3] to the earthing system [9] then loosen nuts [6]; verify that the threaded rod [8] slides into the hole; turn anti-tilt nuts [7] to a distance of 1 mm from plate.



- [1] Load cell.
- [2] Upper and lower bases.
- [3] Galvanized steel upper and lower plates (PIACOKDTL).
- [4] Galvanized steel turnbuckle with horizontal constrainer function (TENDITORE300).
- [5] Self-locking nut Ø18.
- [6] Nut Ø22 to be used as jack.
- [7] Anti-tilt self-locking nut Ø22.
- [8] Threaded rod Ø22.
- [9] Copper wire for earthing connection.